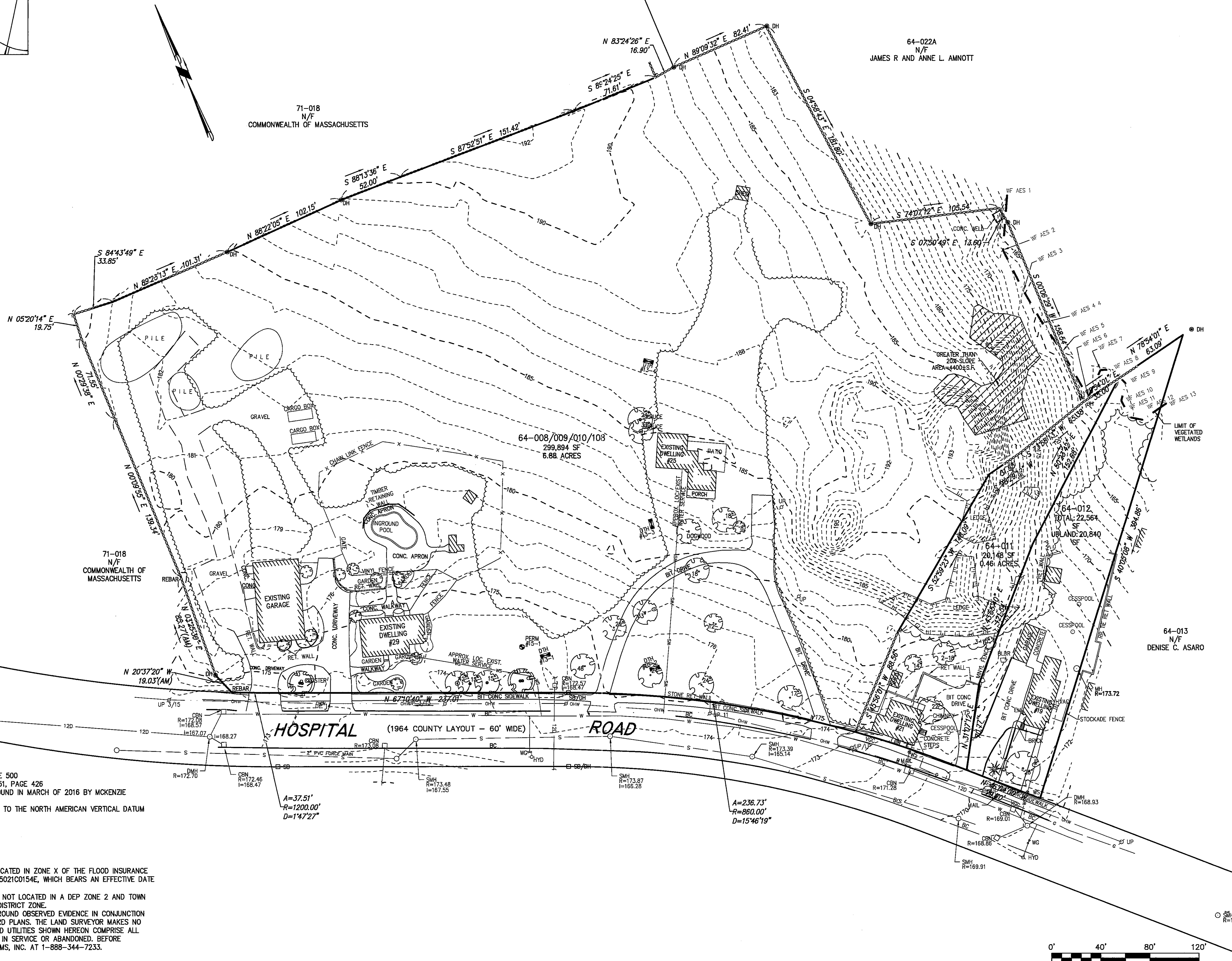


LOCUS MAP  
Not to Scale



LEGEND

- SURVEY SYMBOLS**
- CB/DH □ REBAR
  - SB □ CONCRETE BOUND WITH DRILL HOLE
  - SB/DH □ STONE BOUND
  - SB/DH □ STONE BOUND
- UTILITY SYMBOLS**
- ⊗ GUY POLE
  - GW GUY WIRE
  - ⊞ HVAC UNIT
  - ⊞ TRANSFORMER
  - ⊞ WATER GATE
  - SMH SEWER MANHOLE
  - DMH DRAIN MANHOLE
  - TMH TELEPHONE MANHOLE
  - CBN DRAINAGE CATCH BASIN
  - ⊕ HYDRANT
  - ⊕ POST INDICATOR VALVE
  - ⊕ UTILITY POLE
  - ⊕ YARD LIGHT
  - ⊕ RIP RAP
  - ⊕ BOLLARD
  - ⊕ SIGN
  - ⊕ FA FIRE ALARM
  - DECIDUOUS TREE
  - CONIFEROUS TREE
- LINE DESIGNATORS**
- W WATER MAIN
  - OHW OVERHEAD WIRES
  - G GAS LINE
  - WS WATER SERVICE
  - e UNDERGROUND ELECTRIC
  - D STORM DRAIN LINE
  - S SANITARY SEWER LINE
  - S DRAINAGE SWALE
  - X CHAIN LINK FENCE
- ABBREVIATIONS**
- FFE FIRST FLOOR ELEVATION
  - BIT CONC. BITUMINOUS CONCRETE PAVEMENT
  - CCB CAPE COD BERM
  - EP EDGE OF PAVEMENT
  - BC BITUMINOUS CONCRETE CURB
  - (AM) AS MEASURED
  - RET WALL RETAINING WALL
  - CONC. CONCRETE
  - RCP REINFORCED CONCRETE PIPE
  - VCC VERTICAL CONCRETE CURB
  - ETW EDGE OF TRAVEL WAY
  - MTL METAL BERM
  - VCC VERTICAL CONCRETE CURB
  - CMP CORRUGATED METAL PIPE

- SURVEY NOTES:**
- DEED REFERENCE: BOOK 33500, PAGE 500
  - PLAN REFERENCE: PLAN IN BOOK 2651, PAGE 426
  - THIS SURVEY WAS MADE ON THE GROUND IN MARCH OF 2016 BY MCKENZIE ENGINEERING GROUP, INC.
  - ELEVATIONS SHOWN ARE REFERENCED TO THE NORTH AMERICAN VERTICAL DATUM (NAVD) OF 1988
  - MINIMUM SETBACK REQUIREMENTS:  
ZONING DISTRICT RT  
FRONT YARD 40'  
SIDE YARD 15'  
REAR YARD 50'
  - THE PROPERTY SHOWN HEREON IS LOCATED IN ZONE X OF THE FLOOD INSURANCE RATE MAP COMMUNITY PANEL No. 25021C0154E, WHICH BEARS AN EFFECTIVE DATE OF JULY 17, 2012.
  - THE PROPERTY SHOWN HEREON IS/IS NOT LOCATED IN A DEP ZONE 2 AND TOWN OF MEDFIELD AQUIFER PROTECTION DISTRICT ZONE.
  - UTILITY INFORMATION FROM ABOVE GROUND OBSERVED EVIDENCE IN CONJUNCTION WITH DIG SAFE MARKINGS AND RECORD PLANS. THE LAND SURVEYOR MAKES NO GUARANTEES THAT THE UNDERGROUND UTILITIES SHOWN HEREON COMPRISE ALL SUCH UTILITIES IN THE AREA, EITHER IN SERVICE OR ABANDONED. BEFORE CONSTRUCTION CALL DIG SAFE SYSTEMS, INC. AT 1-888-344-7233.



© MCKENZIE ENGINEERING GROUP, INC.

REV	DATE	DESCRIPTION	BY	APP
1				

PREPARED BY:  
  
**McKenzie Engineering Group, Inc.**  
 PROFESSIONAL CIVIL ENGINEERING AND LAND SURVEYING  
 180 LONGMEADOW DRIVE  
 SUITE 101  
 NORWELL, MA 02061  
 FACSIMILE: (781) 752-2533

**COMPREHENSIVE PERMIT PLAN**  
 KNOWN AS  
**COUNTRY ESTATES OF MEDFIELD, MA**

PROFESSIONAL SURVEYOR:  
  
 DOUGLAS ABERG  
 No. 03383  
 REGISTERED PROFESSIONAL SURVEYOR  
 STATE OF MASSACHUSETTS

OWNERS/APPLICANT:  
**COUNTRY ESTATES OF MEDFIELD, LLC**  
 MEDFIELD, MASSACHUSETTS

SITE ELIGIBILITY SUBMITTAL

DRAWN BY:	JBC
DESIGNED BY:	
CHECKED BY:	
APPROVED BY:	
DATE:	5/19/2016
SCALE:	1" = 40'
PROJECT NO.:	215-183
DWG. TITLE:	

**EXISTING CONDITIONS PLAN**

DWG. NO. **EX-1**