

FIRST FLOOR SQUARE FOOTAGE	=144.52
SECOND FLOOR SQUARE FOOTAGE	=983.32
TOTAL SQUARE FOOTAGE	=1127.84
GARAGE SQUARE FOOTAGE	=302.51

**FIRST FLOOR PLAN - BUILDING TYPE C**  
 DUPLEX - UNIT TYPES 322 SCALE: 1/4" = 1'-0"

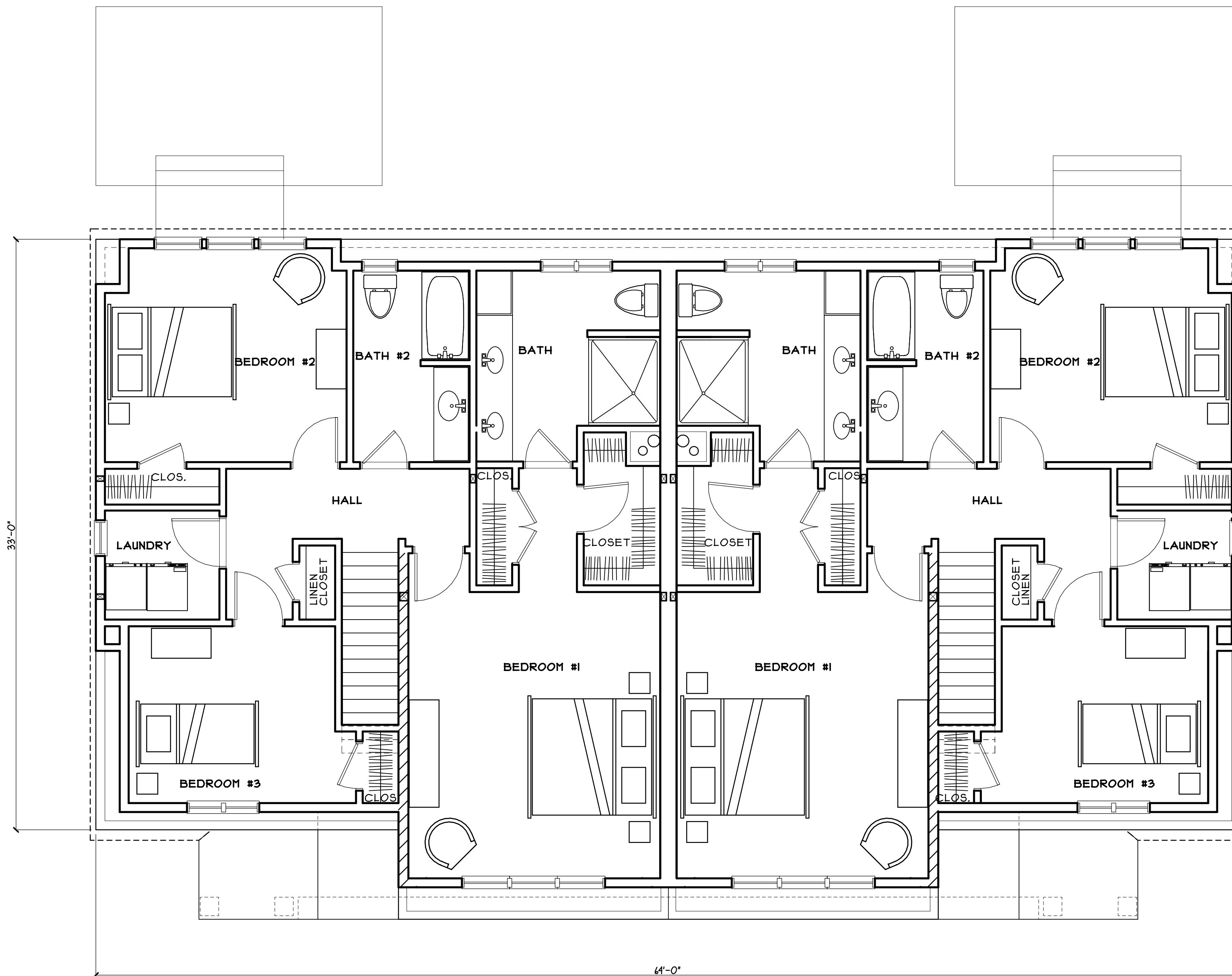
REVISIONS

DUPLEX  
 BLDG TYPE C  
 UNIT TYPE 322

FIRST  
 FLOOR PLAN

DATE: 20 MAY 2016  
 SCALE: 1/4" = 1'-0"  
 FILE: 1521-PLAN UT322

A1



**SECOND FLOOR PLAN - BUILDING TYPE C**  
 DUPLEX- UNIT TYPE 322 SCALE: 1/4" = 1'-0"

JAMES KELLIER AIA  
 AXIOM ARCHITECTS  
 2040 WASHINGTON STREET  
 BOSTON, MASSACHUSETTS 02109  
 (617)771-2000 - (617)771-7000

COUNTRY ESTATES  
 OF MEDFIELD, LLC  
 21 HOSPITAL ROAD  
 MEDFIELD, MA

**AXIOM**

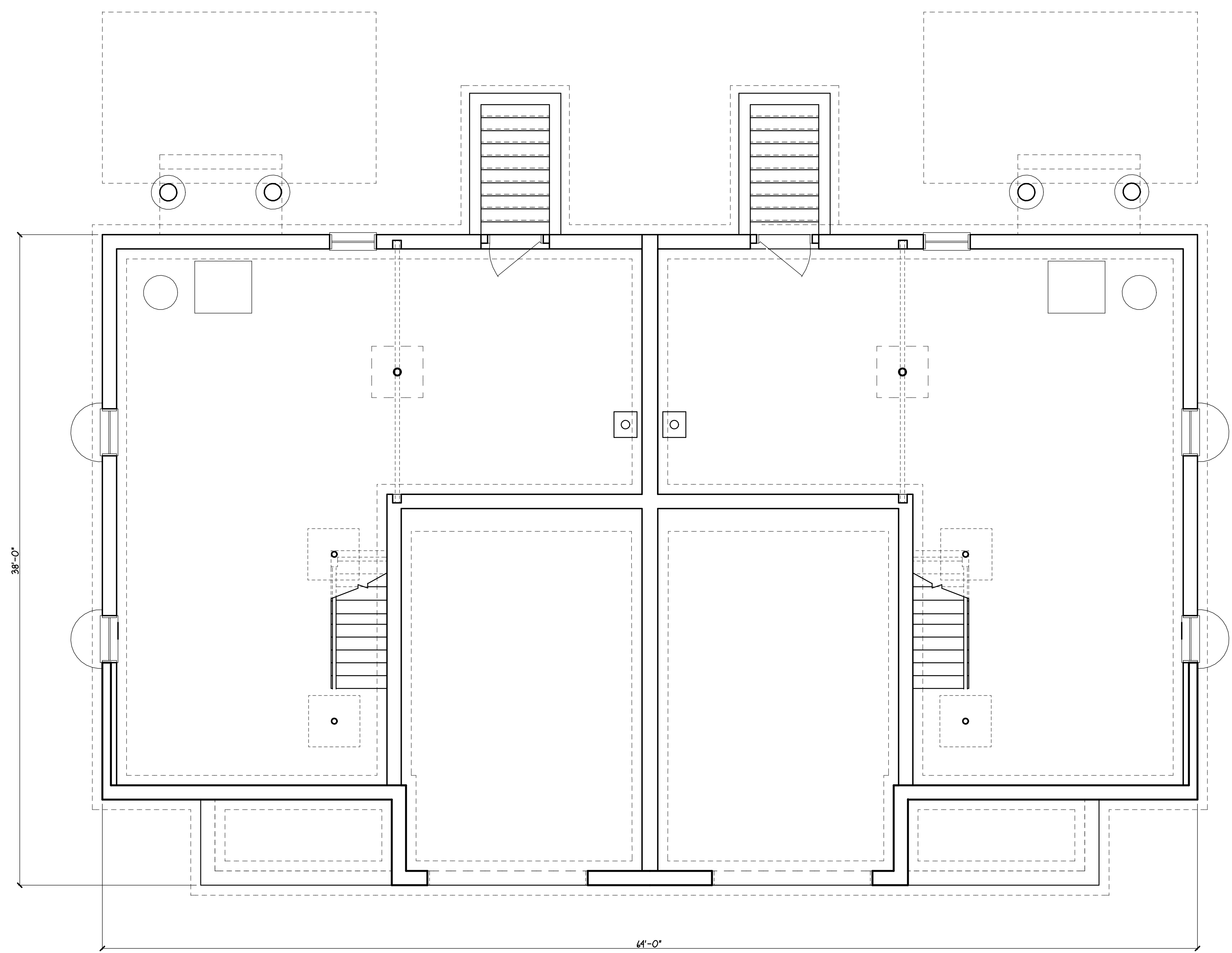
REVISIONS

DUPLEX  
 BLDG TYPE C  
 UNIT TYPE 322

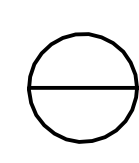
SECOND FLOOR PLAN

DATE: 20 MAY 2016  
 SCALE: 1/4" = 1'-0"  
 FILE: 1521-PLAN UT322

A2



NOTE  
 OPTIONAL FINISHED BASEMENT  
 TO BE PROVIDED BY CONTRACTOR  
 PER OWNERS REQUEST


**BASEMENT FLOOR PLAN - BUILDING TYPE C**  
 DUPLEX - UNIT TYPE 322 SCALE: 1/4" = 1'-0"

JAMES KELLIER AIA  
 AXIOM ARCHITECTURE  
 2048 WASHINGTON STREET  
 BARNSTABLE, MASSACHUSETTS 02536  
 (508)771-2211 - (508)771-7000

COUNTRY ESTATES  
 OF MEDFIELD, LLC  
 21 HOSPITAL ROAD  
 MEDFIELD, MA

**AXIOM**

REVISIONS	

DUPLEX  
 BLDG TYPE C  
 UNIT TYPE 322

BASEMENT  
 FLOOR PLAN

DATE: 20 MAY 2016  
 SCALE: 1/4" = 1'-0"  
 FILE: 1521-PLAN UT322

A3



○ FRONT ELEVATION-BUILDING TYPE C  
DUPLEX- UNIT TYPES 322 SCALE: 1/4" = 1'-0"



○ SIDE ELEVATION-BUILDING TYPE C  
DUPLEX-UNIT TYPES 322 SCALE: 1/4" = 1'-0"

COUNTRY ESTATES  
OF MEDFIELD, LLC  
21 HOSPITAL ROAD  
MEDFIELD, MA

AXIOM

BUILDING  
ELEVATIONS

DATE: MAY 20, 2016  
SCALE: AS NOTED  
FILE:1521-ELEV-UT322

A4



REAR ELEVATION-BUILDING TYPE C  
DUPLEX- UNITS TYPES 322 SCALE: 1/4" = 1'-0"



SIDE ELEVATION-BUILDING TYPE C  
DUPLEX-UNIT TYPES 322 SCALE: 1/4" = 1'-0"

COUNTRY ESTATES  
OF MEDFIELD, LLC  
21 HOSPITAL ROAD  
MEDFIELD, MA

AXIOM

BUILDING  
ELEVATIONS

DATE: MAY 20, 2016  
SCALE: AS NOTED  
FILE:1521-ELEV-UT322

A5